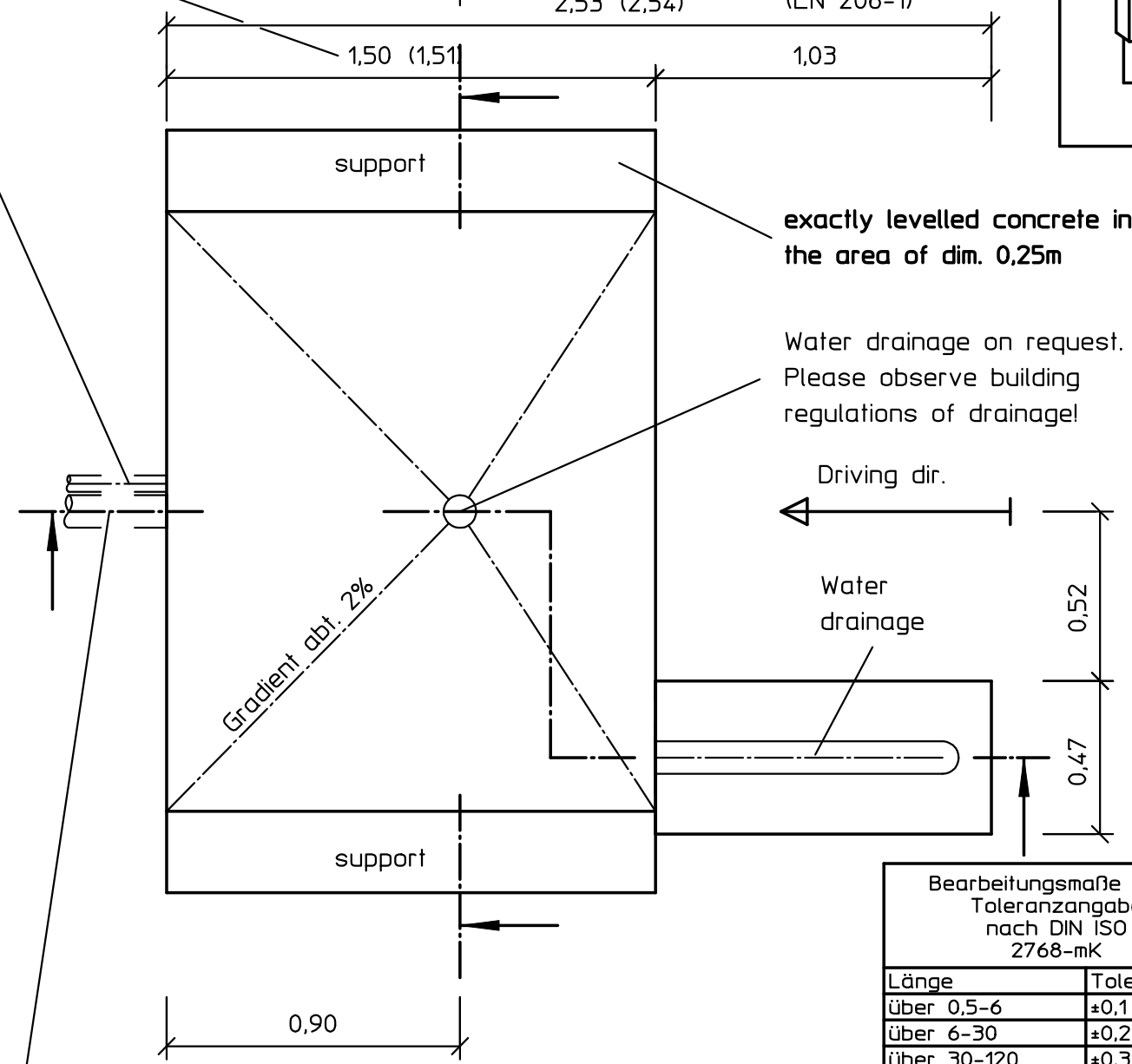
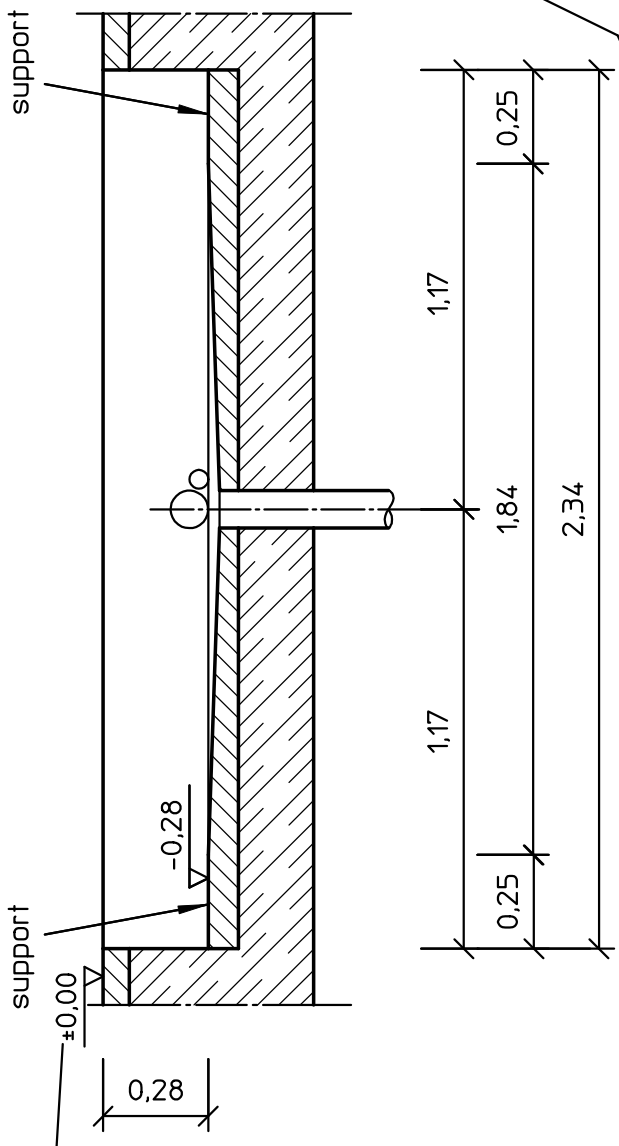
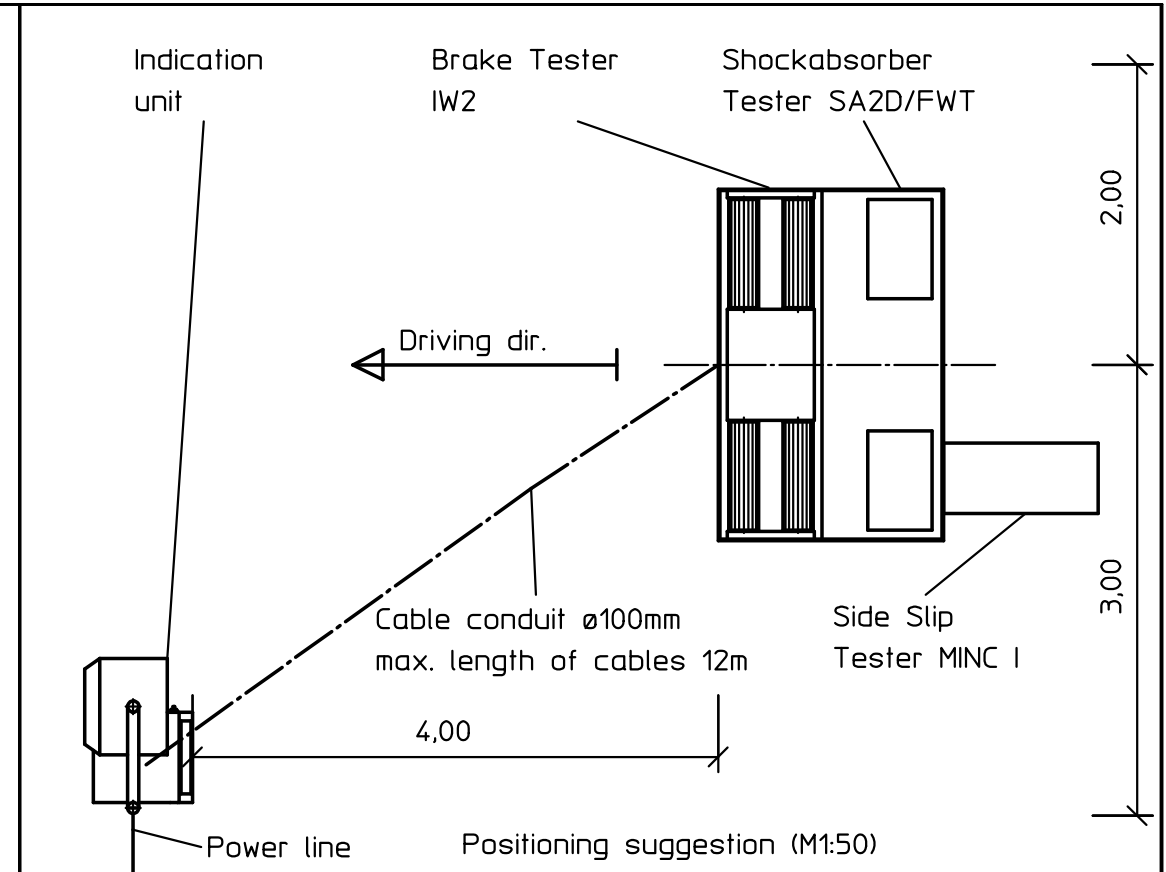
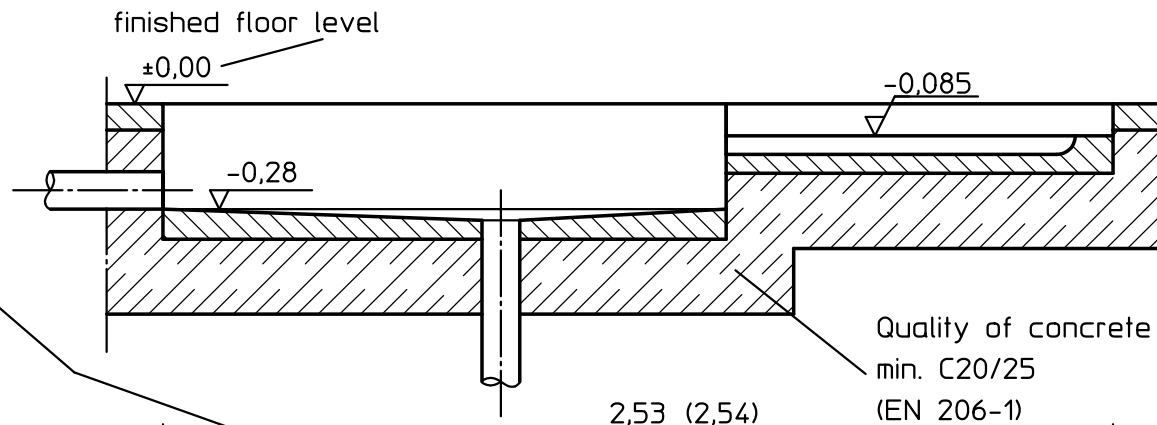


**Power line**  
 3x400V +N +PE, 25A slow,  
 driving power 2x4kW  
 lay to indication unit - approx. 2m  
 overhang is necessary!

Execution for DaimlerChrysler with  
 higher rolls (at rear end) 40mm,  
 foundation +1cm over a length of 1,51m.

**Attention:**  
 If the Brake tester contains  
 a lifting device, a compressed  
 air line R1/4" or DN 8, 8bar  
 is to be installed in the  
 foundation with  
 approx. 2m overhang!  
 Cable conduit ø50mm.

**Combination Shockabsorber Tester "SA2D/FWT"  
 with Brake tester "IW2" roller set No. 2  
 and Sideslip Tester "MINC I"**



exactly levelled concrete in  
 the area of dim. 0,25m

Water drainage on request.  
 Please observe building  
 regulations of drainage!

The buyer is responsible  
 for checking all dimensions!

All dimens. in m

1,00to	Net weight
+ 4,00to	max. axle load
= 5,00to	max. load foundation plate

**Attention:**  
 In countries with left-hand-  
 drive, it is recommended  
 to install the sideslip tester  
 and the indication  
 unit on the opposite side!  
 see Drawing No. F9124, sheet 3

We recommend  
 angle iron pit frame  
 for edge protection.

finished floor level  
 Cable conduit ø100mm to indication unit.  
**Attention: Do not make tight arches!**

Bearbeitungsmaße ohne Toleranzangabe nach DIN ISO 2768-mK		Schutzvermerk nach DIN 34 beachten!		Maßstab 1:20	Gewicht
Länge	Toleranz	Datum	Name	Werkstoff, Halbzeug, Rohteil-Nr. usw. English	
Über 0,5-6	±0,1	Bearb. 15.12.1998	Grf.	Benennung <b>Fpl IW2 RS2 mit SA2D/FWT u. Minc 1</b>	
Über 6-30	±0,2	Gepr. 01.08.2003	Grf.		
Über 30-120	±0,3	Norm			
Über 120-400	±0,5				
Über 400-1000	±0,8			Zeichnungsnummer <b>F9124</b>	
Über 1000-2000	±1,2			Index	Blatt 1
Über 2000-4000	±2,0				von 5
5019		01.08.2003	Ths.	Ers. f.: 91001.00.01.024	
Originalgröße der Zeichnung: A3		Ind. Änd.-Nr. Datum Name Ursprung:		Ers. d.:	

